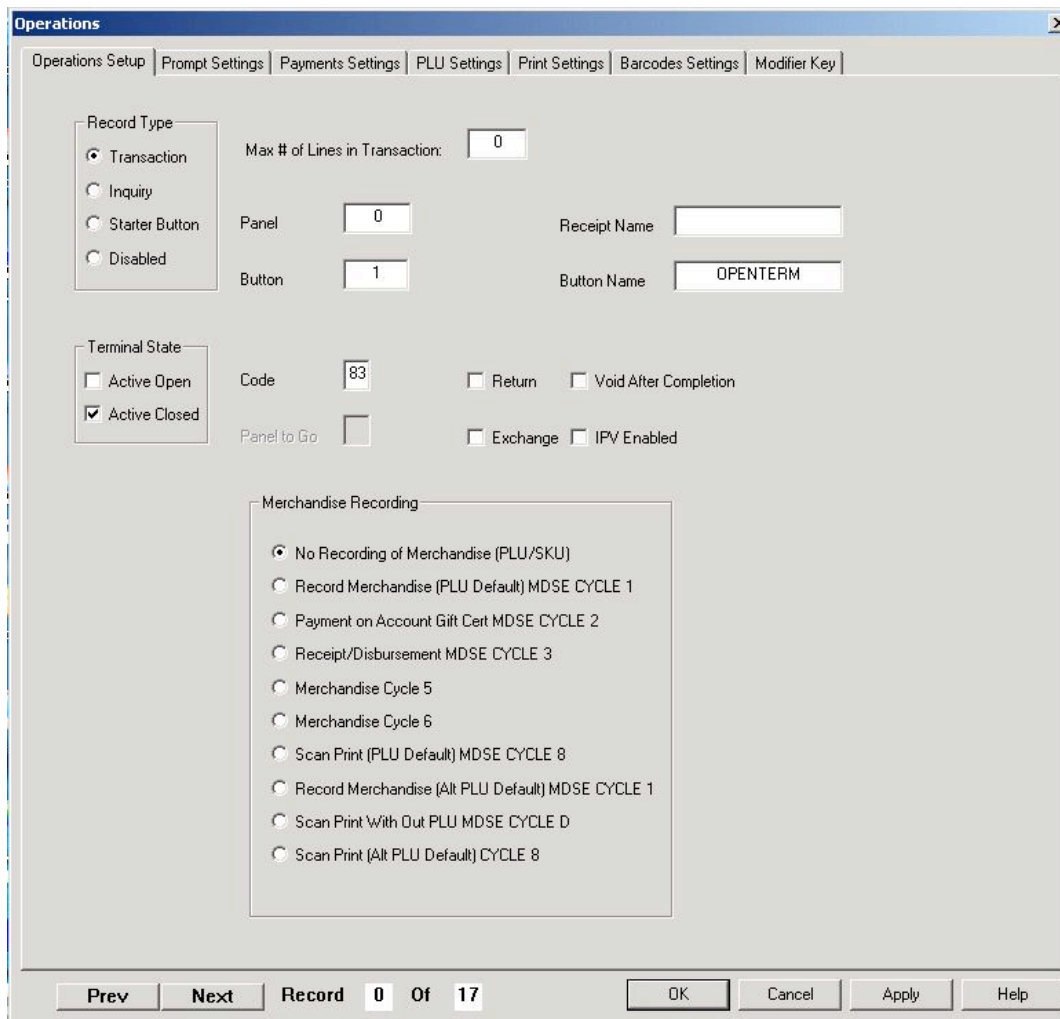


## MOBILETY Configuration Editor

### MOBILEED

**MOBILEED** is the Business Rules editor that allows for the modification and control of the **MOBILETE** engine.



The purpose of **MOBILEED** is to provide a GUI interface for the user to set the business rules of the **MOBILETE** terminal application.

## Display Navigation Descriptions

<b>Tabs</b>	
Operations Set-Up	Parameters that define the overall functionality of each operation.
Prompt Settings	User test prompt messages available for the transaction.
Payments Settings	Parameters for defining payment(s) and/or refunds for the specific transactions.
PLU Settings	Parameters for PLU activation and control for the specific transactions.
Print Settings	Parameters defining print options for the specific transactions.
Barcode Settings	Parameters for barcode generation.
Modifier Key	Key labels, positions, and availability of modifier keys by transaction.
<b>Buttons</b>	
Prev	Moves to the previous transaction definition in the current parameter file and displays the record in the same editor palette.
Next	Moves to the next transaction definition in the current parameter file and displays the record in the same editor palette.
Record 0 of 17	Displays the transactional record being edited. The first value (in this example, "0") is the transaction by position in the file counting from "0." The second (in this example, "17") value is the number of records in the file.
OK	Applies the last change since the last "apply" and exits the current editor window.
Cancel	Cancels the last set of changes made (up to the last "apply") and exits the window.
Apply	Updates the record with the change(s) since the last "apply." Does not exit the current window.
Help	Invokes the help message/display.

### Database Input

The editor operates in Windows 2000, Windows XP Pro, Windows XP Home, and Windows Server 2003.