

MOBILETY Product Suite

Batch Handheld/RF LAN/WAN Handheld



The **MOBILETY** Product Suite is a series of components developed to support the **MOBILETE** terminal application.

MOBILETE provides a flexible, modifiable engine capable of fully utilizing the current state of the art PDT hardware.

The powered by **MOBILETY** configurations provide a scalable, configurable solution for the full spectrum of PDT environments. These include Retail, Warehouse, Distribution, Transportation Logistics, Field Service, Hospitality, Health Care, Route Accounting, and Manufacturing.

MOBILETY is operational in Batch with ActiveSync communication, 802.11b/g for RF and, and CDME for Cellular.

MOBILETY also supports Bluetooth for device-to-device communications.

Interface Modules

The full **MOBILETY** suite consists of the following modules:

MOBILETE ~ Terminal Application:	A multi-platform touch screen, configurable, WinCE based transaction engine application.
MOBILEDB ~ Database Manager:	A command and control console providing import, export, and editing tools for the MOBILETY databases.
MOBILERF ~ RF Interface:	A command and control console for 802.11b/g, TCP/IP RF installation of MOBILETY .
MOBILEPAY ~ Credit Interface:	An internet server that provides a secure credit interface to MOBILETY .
MOBILEED ~ Editor:	A Windows based application that allows for the modification and control of the MOBILETY engine.
MOBILEEM ~ Emulator:	A Windows based emulator that allows for the operation and testing of a MOBILETY configuration.

The **MOBILETY** suite is developed and written in Microsoft C# and C.NET language, using Microsoft Visual Studio.

The **MOBILETE** terminal application is constructed around the **IPI** concept (Isolated Peripheral Interface). This concept has the transactional engine of **MOBILETE** isolated from the specific drivers required to operate the peripherals of today's handhelds.

MOBILETY portable processing made **easy**

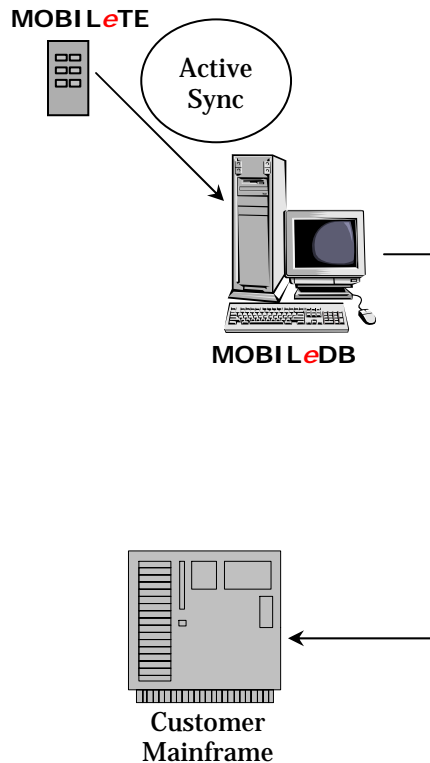
Communication Environments

The suite of products represents the ability to place a mobile device in a large variety of demanding environments:

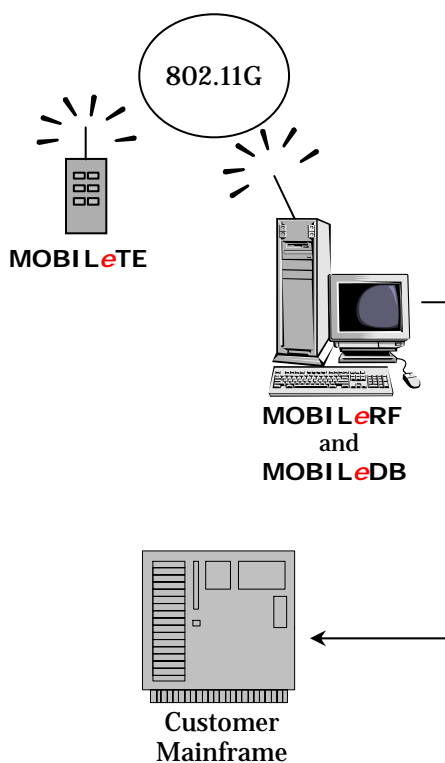
- Sales
- Ticketing
- Inventory
- Manufacturing Floor Control

The broadband of business requirements considered in the development of **MOBILETY** along with the IPI concept, allow for solutions based upon “Best of Breed” hardware and the ability to adapt to the specific needs of the end user.

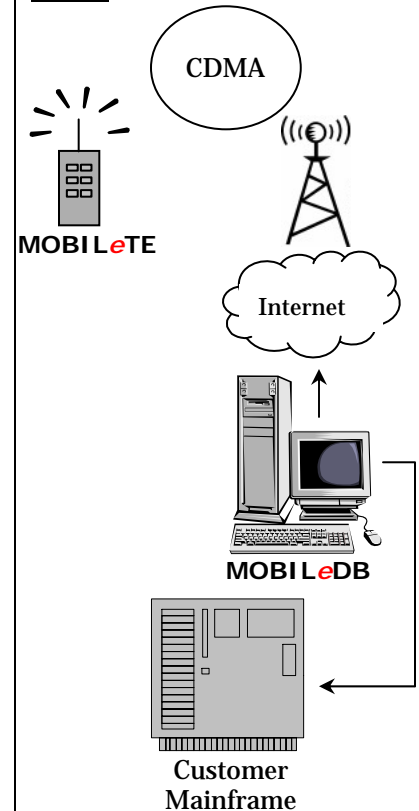
Batch



RF

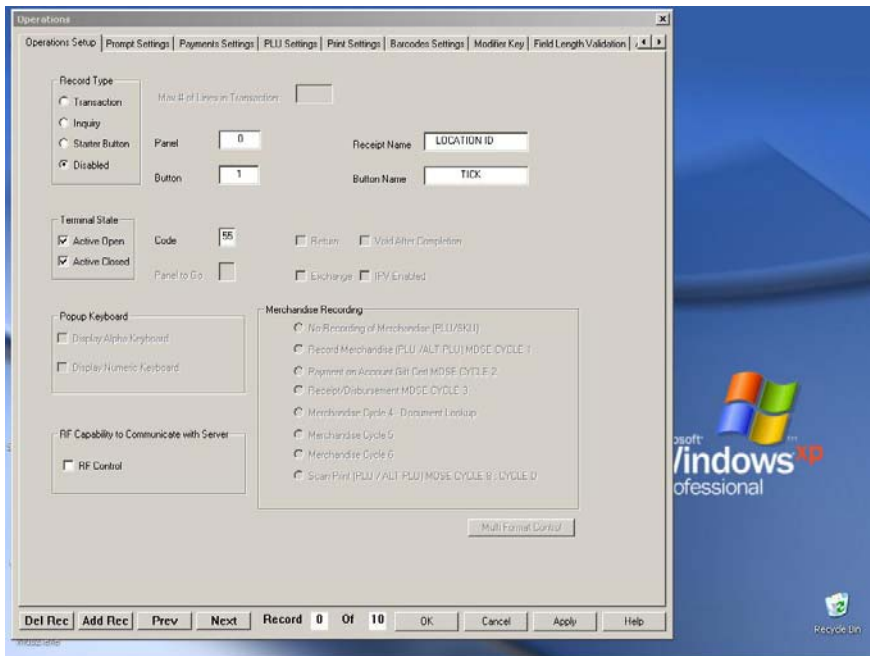


WAN

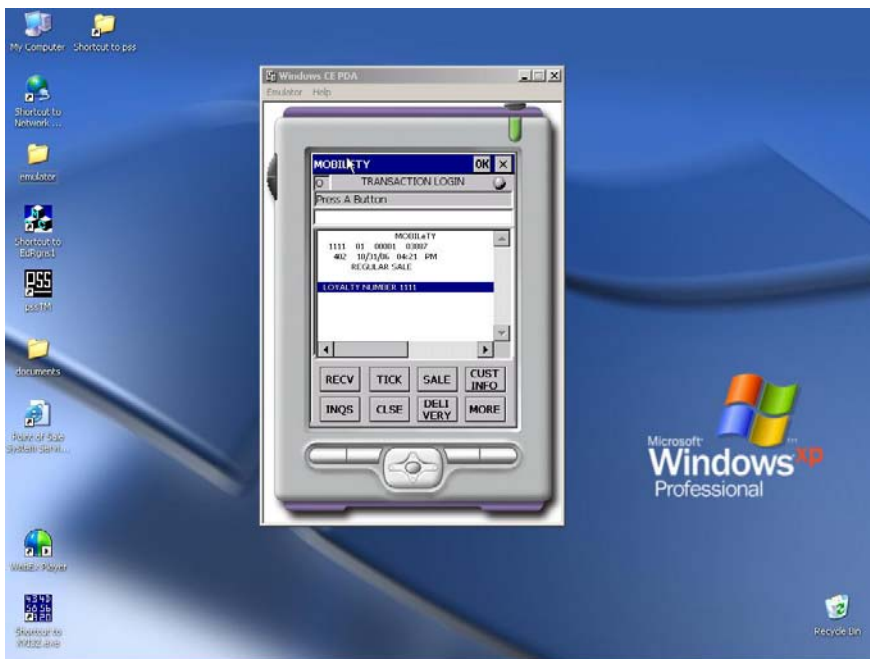


MOBILETY portable processing made easy

Tools



MOBILEeD (pictured left) provides a GUI intuitive configuration editor, allowing for rapid development of the user's business rules.



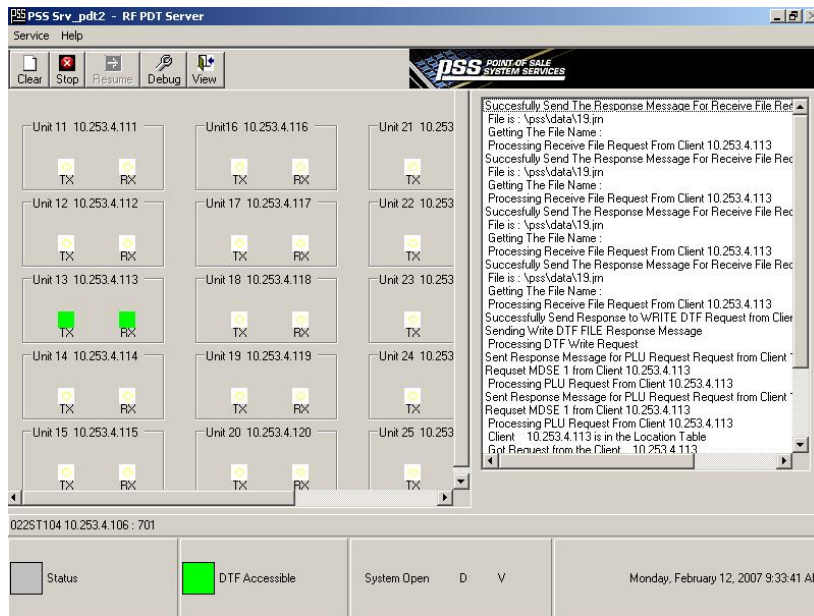
MOBILEeEM (pictured left) provides full **MOBILETY** functionality on any Windows based PC, allowing for testing and training.

MOBILETY portable processing made easy

Server Consoles



MOBILEDB (pictured at left) provides a command and control console for the **MOBILEDB** databases. **MOBILEDB** allows for storage, maintenance, and review of the data files supported by **MOBILETY**. **MOBILEDB** also provides for data import, export conversion, and formatting. **MOBILEDB** is utilized in all communication environments (batch, RF, and Cellular/WAN).



MOBILERF (pictured at left) provides a command and control console for the operation of the TCP/IP, 802.11b/g protocol RF LAN environment for the **MOBILETY** application.

MOBILETY portable processing made easy

Server Consoles

The screenshot shows the 'PSS Web Pay Log Viewer' application window. It features a 'Filter by:' and 'Sort by:' section at the top left, a 'Refresh' button, and an 'Auto Refresh' checkbox. A logo for 'PSS POINT OF SALE SYSTEM SERVICES' is visible in the top right. The main area contains a table with the following columns: Index, PsaSellerIndex, PSSdate, PSSTime, SellerCompany, Store, Term, SaleORCredit, HandORSwipe, Results, and ResultMessage. The table lists numerous transactions, many with error messages such as 'Credit error: V63H0B4099CD is a failed transaction' and 'Invalid account number'. At the bottom of the window, there are status indicators for various services: IIS Service, HTTP SSL Service, W/W/V Pub Service, FTP Pub Service, and PSS Web Server, all shown as green. The Windows taskbar at the bottom shows the Start button, several open applications, and the system clock at 10:33 AM.

Index	PsaSellerIndex	PSSdate	PSSTime	SellerCompany	Store	Term	SaleORCredit	HandORSwipe	Results	ResultMessage
94	57	3/31/2006	8:49 AM	PSS Test Company	001	0007	C		105	Credit error: V63H0B4099CD is a failed transaction
70	57	3/24/2006	2:42 PM	PSS Test Company	001	0007	C		105	Credit error: V63H0B4099CD is a failed transaction
132	57	4/13/2006	10:23 AM	PSS Test Company	001	2000	S	S	4	Invalid amount
105	57	4/12/2006	1:55 PM	PSS Test Company	002	0099	S	S	23	Invalid account number
71	57	3/24/2006	2:43 PM	PSS Test Company	002	0099	S	S	23	Invalid account number
101	57	4/5/2006	3:40 PM	PSS Test Company	002	0100	S	S	23	Invalid account number
72	57	3/24/2006	2:43 PM	PSS Test Company	002	0100	S	S	23	Invalid account number
107	57	4/12/2006	2:04 PM	PSS Test Company	007	1223	S	H	126	Under review by Fraud Service
73	57	3/24/2006	2:43 PM	PSS Test Company	007	1223	S	H	126	Under review by Fraud Service
127	57	4/12/2006	6:34 PM	PSS Test Company	012	0056	S	S	23	Invalid account number
126	57	4/12/2006	6:34 PM	PSS Test Company	012	0056	S	S	23	Invalid account number
104	57	4/12/2006	9:37 AM	PSS Test Company	012	0056	S	S	23	Invalid account number
100	57	3/31/2006	11:14 AM	PSS Test Company	012	0056	S	S	23	Invalid account number
99	57	3/31/2006	9:01 AM	PSS Test Company	012	0056	S	S	23	Invalid account number
98	57	3/31/2006	8:56 AM	PSS Test Company	012	0056	S	S	23	Invalid account number
95	57	3/31/2006	8:49 AM	PSS Test Company	012	0056	S	S	23	Invalid account number
92	57	3/27/2006	11:35 AM	PSS Test Company	012	0056	S	S	23	Invalid account number
89	57	3/27/2006	11:33 AM	PSS Test Company	012	0056	S	S	23	Invalid account number
86	57	3/27/2006	10:08 AM	PSS Test Company	012	0056	S	S	23	Invalid account number
80	57	3/27/2006	9:53 AM	PSS Test Company	012	0056	S	S	23	Invalid account number
106	57	4/12/2006	2:02 PM	PSS Test Company	013	1224	S	H	126	Under review by Fraud Service
79	57	3/27/2006	9:52 AM	PSS Test Company	013	1224	S	H	126	Under review by Fraud Service
78	57	3/27/2006	9:38 AM	PSS Test Company	013	1224	S	H	126	Under review by Fraud Service
77	57	3/27/2006	9:24 AM	PSS Test Company	013	1224	S	H	126	Under review by Fraud Service
74	57	3/24/2006	2:44 PM	PSS Test Company	013	1224	S	H	126	Under review by Fraud Service
128	57	4/12/2006	6:34 PM	PSS Test Company	111	2222	C		105	Credit error: V63H0B4099CD is a failed transaction
123	57	4/12/2006	6:33 PM	PSS Test Company	111	2222	C		105	Credit error: V63H0B4099CD is a failed transaction
122	57	4/12/2006	6:33 PM	PSS Test Company	111	2222	C		105	Credit error: V63H0B4099CD is a failed transaction

MOBILEPAY provides internet based processing of credit card authorization and settlement.



MOBILETY, via **MOBILEPAY**, uses PayPal to provide secure TCP/IP communications.

MOBILETY, via **MOBILEPAY**, uses PayPal to provide credit card processing and authorization.

PayPal has quickly become a global leader in online payment solutions with 100 million account members worldwide. It is available in 103 countries and regions around the world, buyers and sellers on eBay, online retailers, online businesses, and traditional offline businesses are transacting with PayPal.

PayPal has received close to 20 awards for technical excellence from the internet industry and the business community at large -most recently the 2003 Webby Award for Best Finance Site and the 2003 Webby People's Voice Award.

