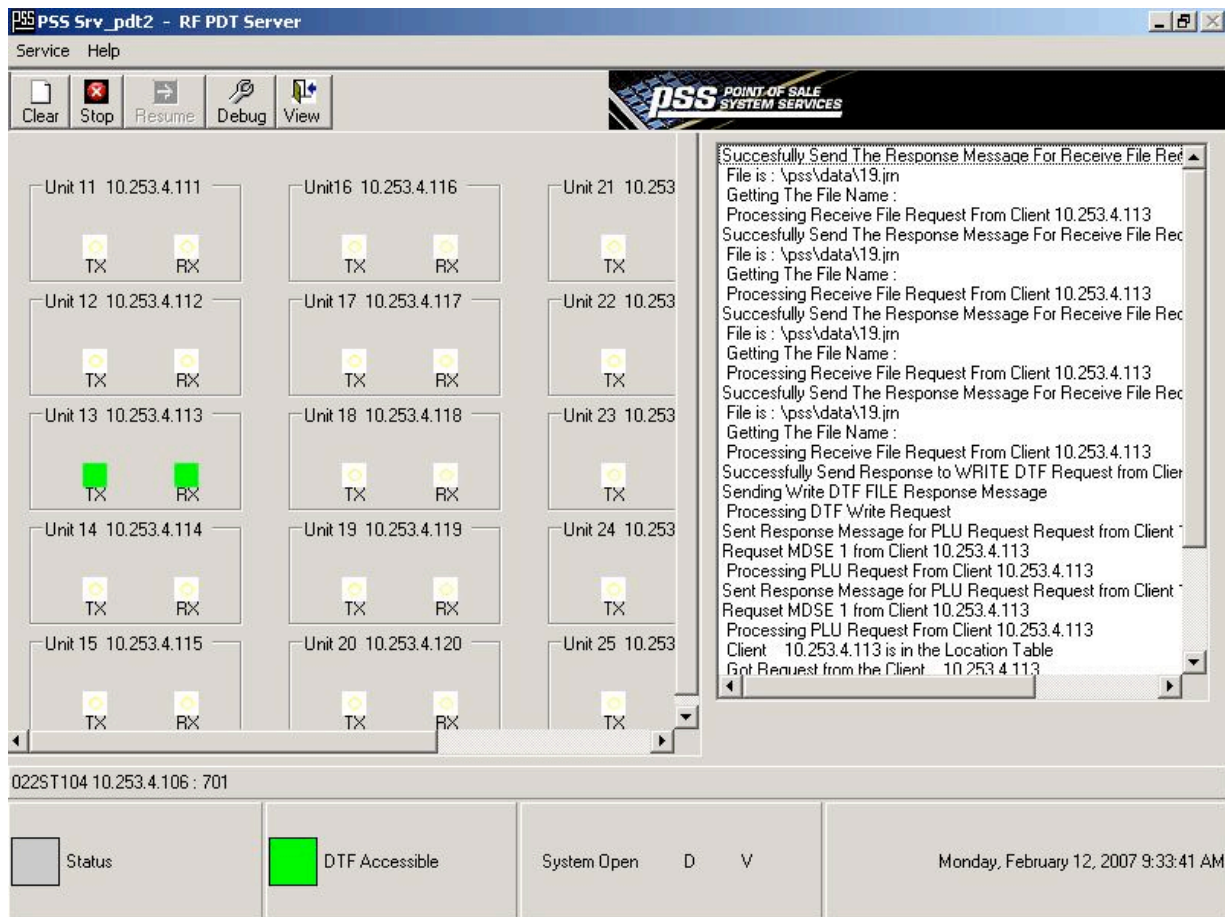


MOBILETY RF Interface

MOBILERF

For the 802.11b/g communication environment, the **MOBILETE** terminal application is interfaced to the **MOBILETY** database via **MOBILERF**.



This command and control console provides the remote functions of message processing, file look-up, transaction validation, DTF/TLOG write, peripheral and supplementary processing, launching, and menu access.

MOBILERF allows for a user-friendly, single point of reference for all operating devices.

Clear – Clears the activity window.

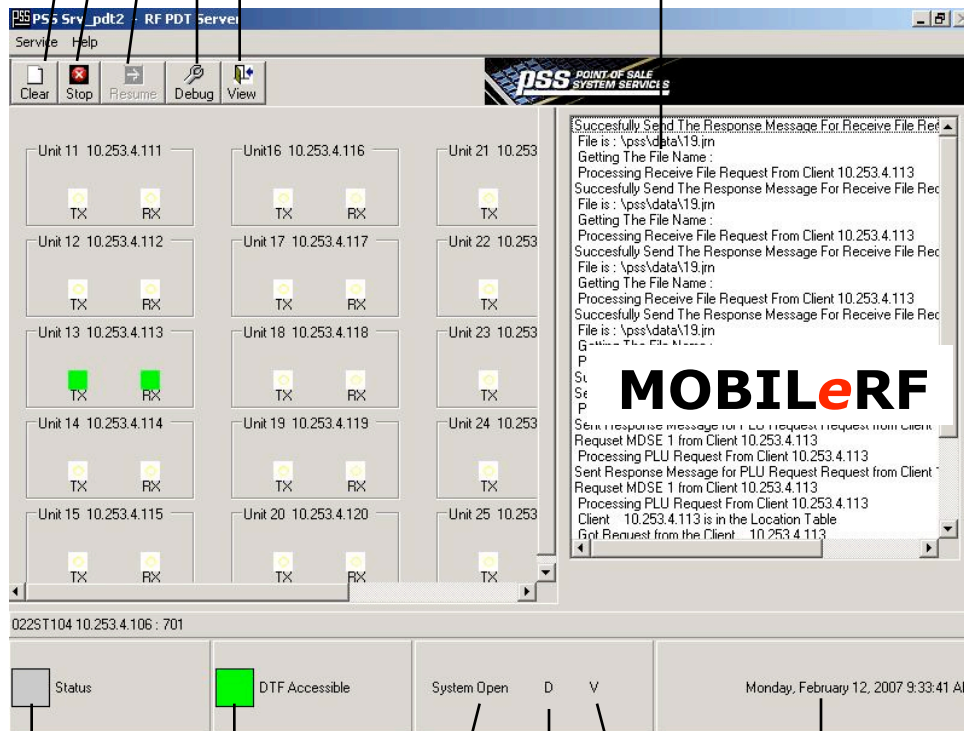
Stop – Stops the communication between PDT(s) and server.

Resume – Starts the communication between PDT(s) and server.

Debug – Toggles on and off the debug logging messages in the pss Log00.pss.

View – Toggles on and off the display of the activity window.

System Activity Window



Server Comm Status

DTF Status

D = Debug is on.

V = Activity window is on.

System Date & Time

System Open = System is active.

System Close = System is temporarily disabled.

MOBILERF operates in Windows 2000, Windows XP Pro, Windows XP Home, and Windows Server 2003.

MOBILERF is a companion product to **MOBILEDB**, providing front end I/O to the Access or SQL database.